

Side-loading lamp

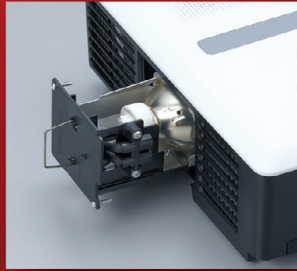
Versatility and High Brightness in an UltraPortable Cabinet

- Native XGA resolution (1024x768)
- LCD technology
- Bright 4200 ANSI lumens and 600:1 contrast ratio
- Easy access side-loading lamp design for convenient lamp maintenance
- Anti-theft security anchor to help prevent unauthorized removal of projector
- Up to a 5000-hour lamp life (low mode)
- Includes embedded LAN Monitoring Utility for remote management

The Mitsubishi XL650U is a versatile LCD projector for business or educational needs. It produces outstanding crisp and vivid images with its bright 4200 ANSI lumens and 600:1 contrast ratio. It includes features designed to lower overall total cost of ownership such as an accessible side-loading lamp for easy lamp maintenance, and the ability to remotely manage one or several XL650U projectors with its integrated ProjectorView™ LAN connectivity. Additionally, Mitsubishi's XL650U is equipped with durable, long lasting inorganic LCD panels and includes an anti-theft security anchor to help deter any unauthorized removal or theft.

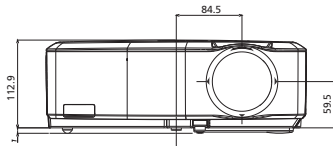
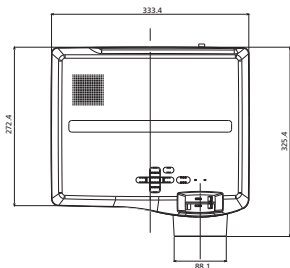
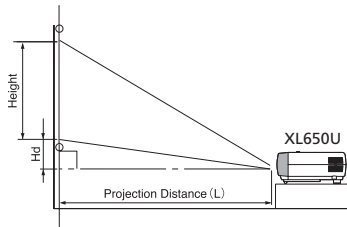
XL650U

ULTRAPORTABLE XGA PROJECTOR



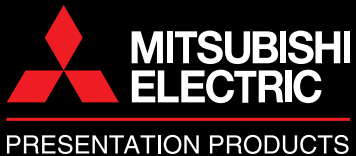
SCREEN					DISTANCE FROM SCREEN (L)				Hd		
Diagonal Size		Width		Height		Max.Zoom		Min.Zoom		Hd	
inch	cm	inch	cm	inch	cm	inch	m	inch	m	inch	cm
40	102	32	81	24	61	46	1.2	56	1.4	2.4	6
60	152	48	122	36	91	70	1.8	85	2.2	3.6	9
80	203	64	163	48	122	94	2.4	114	2.9	4.8	12
100	254	80	203	60	152	118	3.0	142	3.6	6.0	15
150	381	120	305	90	229	177	4.5	215	5.5	9.0	23
200	508	160	406	120	305	237	6.0	287	7.3	12.0	31
250	635	200	508	150	381	297	7.5	359	9.1	15.0	38
300	762	240	610	180	457	357	9.1	-	-	18.0	46

Unit measured in inches. *Hd is distance from lens axis to image bottom.



Unit measured in millimeters (mm)

DISPLAY TECHNOLOGY	0.8" 3-LCD Inorganic (with Micro Lens Array)
RESOLUTION	1024 x 768 (Total 786,432 pixels), 600 Video lines
BRIGHTNESS	4200 ANSI lumens
CONTRAST RATIO	600 : 1 (on/off)
ZOOM/FOCUS	Manual Focus & Zoom Lens (Zoom Ratio 1.2:1)
PROJECTION LENS	F= 1.7-1.9
THROW RATIO	1.47 - 1.78
OFF SET AXIS	9 up : 1 down (No variable lens shift)
PICTURE SIZE	40-300 inches diagonal
SOURCE LAMP	261W (Shut Off Time 2000Hrs) with Low Mode (220W:Shut Off Time 5000Hrs)
PC COMPATIBILITY	Resolution ; 640 x 480 (Expand) - 1024 x 768 (Real) - 1280 x 1024 (Compressed) - 1600 x 1200 (Re-Sampling) Sync on Green available
VIDEO COMPATIBILITY	NTSC / NTSC 4.43 / PAL (including PAL-M, N) / SECAM / PAL-60 Component Video ; 480i/p(525i/p), 576i/p(625i/p), 720p(750p 50/60Hz), 1080i(1125i 50/60Hz), SCART (RGB + 1V sync)
INPUT TERMINALS	RGB: Mini D-sub 15pin x 2, DVI-D(with HDCP) x 1, Audio: Stereo mini jack (ø3.5mm) x 2, Video: RCA x 1, S-VIDEO x 1, Audio: RCA (L,R) x 2
OUTPUT TERMINAL	RGB: Mini D-Sub 15pin x 1, Audio: Stereo mini jack (ø3.5mm) x 1, DC OUT: 5V 1.5A(max) for products using a 5V DC
COMMUNICATION TERMINAL	LAN (RJ-45) x 1 (Projector control), RS-232C D-Sub 9pin x 1 (Direct command is available.), USB for Mouse Cursor Control
SCANNING RATE	[H] 15 - 100 kHz, [V] 50 - 120 Hz, [Dot Clock] max.140 MHz
AUDIO SPEAKER	3 W Mono
HEIGHT ADJUSTER	One Push Front leg (-1 to 7 degree variable)
HAND HELD REMOTE	Full Projector Control, USB Mouse Cursor Control, MS PowerPoint™, Page Up/Down and Home/End via USB, High brightness Laser pointer (with cancelable mode)
POWER CONSUMPTION	380 W / 3.9 A
DIMENSION	13.1" x 4.4" x 10.7" (333 x 113 x 272 mm) (W x H x D)
WEIGHT	10.4 lbs. (4.7 kg.)
POWER REQUIREMENTS	AC 100-240V, 50/60 Hz
FAN NOISE	39 dBA (Low mode: 35 dBA)
SUPPLIED ACCESSORIES	<ul style="list-style-type: none"> AC Power Cable USB Cable Soft Carrying Case AV Cable RS-232C cable User Manual CD Computer Video Cable Remote Control Unit with Batteries Safety Manual
OPTIONAL ACCESSORIES	Replacement Lamp Part (VLT-XL650LP), Wireless LAN Unit (MA-WL-DVI), Hard Case (XH50-ATAC), Ceiling Mounts (PROJ-UCM or PROJ-UCM-PRO)
WARRANTY	3-Years Part and Labor, 3-Years Express Replacement Assistance (ERA), 90-Days Lamp Warranty
OUTSTANDING FEATURES	<ul style="list-style-type: none"> Selectable Gamma, RGB-Color, RGB-Tint correction PJLink available (Projector control by network LAN) ProjectorView™ available (Projector control and e-mail) Wall Color Correction (Beige/Blue/Green/Pink/Black Board) High image quality Picture-in-Picture User programmable Splash screen (Screen capture) Digital Keystone Correction for Vertical and Horizontal (Vertical:MAX +/- 35 deg (+/- 35 steps), Horizontal:MAX +/- 25 deg (+/- 25 steps) at XGA) Video Line Doubler ; 2:3 / 2:2 pull-down 3D Color Uniformity correction 3D Y/C digital comb filter and 3D noise reduction sRGB specification mode 10 languages OSD (Eng/Fre/Spa/Ger/Ita/Japa/Korea/China/Russ/Portugese) Expand Digital Zoom (single window) Password protected menu access Anti-theft security anchor Side-access Lamp



MITSUBISHI DIGITAL ELECTRONICS AMERICA, INC.
Presentation Products Division
Toll Free: 888.307.0349
Email: pppinfo@mdea.com
www.mitsubishi-presentations.com

Canada
Mitsubishi Electric Sales Canada Inc.
Information Technologies Group
Phone: 905.475.7728
www.mitsubishielectric.ca



BrightEra™

©2006 Mitsubishi Digital Electronics America, Inc. Standard features, options and specifications subject to change without notice. All trademarks are the property of their respective holders.

PP6052-11/06-15M-LITXL650U